

2018 IEEE International Conference on
Industrial Engineering & Engineering Management

 **IEEE IEEM2018**

16-19 Dec ♦ Bangkok, Thailand

WWW.IEEM.ORG



Organizers:

IEEE TEMS Thailand Chapter
IEEE TEMS Singapore Chapter
IEEE TEMS Hong Kong Chapter

IEEE Catalog Number: CFP18IEI-ART
ISBN: 978-1-5386-6786-6

Copyright and Reprint Permission: Abstracting is permitted with credit to the source. Libraries are permitted to photocopy beyond the limit of U.S. copyright law for private use of patrons those articles in this volume that carry a code at the bottom of the first page, provided the per-copy fee indicated in the code is paid through Copyright Clearance Center, 222 Rosewood Drive, Danvers, MA 01923. For reprint or republication permission, write to IEEE Copyrights Manager at pubs-permissions@ieee.org. All rights reserved. Copyright © 2018 by IEEE.

Organizers & Committees

Advisory Committee

Thira JEARSIRIPONGKUL
Thammasat University

Apiwat MUTTAMARA
Thammasat University

Jitkasem NGAMNIL (Chair)
IEEE Thailand Section

Kesinee VITONCHART
Thammasat University

Organizing Committee

Organizing Chairs

Kah Hin CHAI
National University of Singapore

Tritos LAOSIRIHONGTHONG
Thammasat University

Program Chairs

Roger JIAO
Georgia Institute of Technology

Min XIE
City University of Hong Kong

Publication Chair

Anil K. VARMA
Singapore Polytechnic

Members

Carman Ka Man LEE
Hong Kong Polytechnic University

Seung Ki MOON
Nanyang Technological University

Szu Hui NG
National University of Singapore

Local Arrangement Committee

Korbkul JANTARAKOLICA
*Rajamangala University of
Technology Rattanakosin*

Poomporn THAMSATITDEJ
Mahidol University

Busakorn WATCHARSIROJ
*National Institute of Development
Administration*

Jutamas WONGKANTARAKORN
*Rajamangala University of
Technology Rattanakosin*

Technical Program Committee

Ammar AAMER
Sampoerna University

Dotun ADEBANJO
University of Greenwich

Ali Reza AFSHARI
Islamic Azad University, Shirvan

Michel ALDANONDO
Toulouse University / IMT-Mines Albi

Hisham ALIDRISI
King Abdulaziz University

Teresa ALVAREZ
University of Valladolid

Elita AMRINA
Andalas University

Emrah ARICA
SINTEF Technology and Society

Philipp BAUMANN
University of Bern

Winda Nur CAHYO
Islamic University of Indonesia

Zhiqiang CAI
*Northwestern Polytechnical
University*

Ayon CHAKRABORTY
*Indian Institute of Management
Tiruchirapalli*

Paul CHANG
*National Changhua University of
Education*

Sheng-Hung CHANG
*Minghsin University of Science and
Technology*

Mu-Chen CHEN
National Chiao Tung University

Shin-Guang CHEN
Tungnan University

Thierry COUDERT
University of Toulouse

Rob DEKKERS
University of Glasgow

Martin DROZDA
Slovak University of Technology

Ahmed EL-BOURI
Sultan Qaboos University

Akram EL-TANNIR
Beirut Arab University

Xiuzhu GU
Tokyo Institute of Technology

Aldy GUNAWAN
Singapore Management University

Indra GUNAWAN
The University of Adelaide

Siana HALIM
Petra Christian University

Budi HARTONO
Universitas Gadjah Mada

Markus HARTONO
University of Surabaya

Takashi HASUIKE
Waseda University

Yihai HE
Beihang University

Yu-Hsiang HSIAO
National Taipei University

Qingpei HU
Chinese Academy of Sciences

Chi-Cheng HUANG
Aletheia University

Chin-Yu HUANG
National Tsing Hua University

Lars HVAM
Technical University of Denmark

Supachart IAMRATANAKUL
Kasetsart University

Bolanle IKOTUN
University of South Africa

Shinji INOUE
Kansai University

Ville ISOHERRANEN
*University of Oulu, Kerttu Saalasti
Institute*

Raja JAYARAMAN
Khalifa University

Mukondeleli KANAKANA –
KATUMBA
University of South Africa

Hadi KHORSHIDI
The University of Melbourne

Organizers & Committees

Gitae KIM
Hanbat National University

Chien-Liang KUO
Chinese Culture University

Yong-Hong KUO
The University of Hong Kong

C.K. KWONG
The Hong Kong Polytechnic University

Jasmine Siu Lee LAM
Nanyang Technological University

Jun-Der LEU
National Central University

Yan-Fu LI
Tsinghua University

Xinyu LI
Huazhong University of Science and Technology

Wenzhu LIAO
Chongqing University

SC Johnson LIM
Universiti Tun Hussein Onn Malaysia

Tyrone T. LIN
National Dong Hwa University

Weidong LIN
Singapore Institute of Technology

Danping LIN
Shanghai Maritime University

Mei-Chen LO
National United University

Huitian LU
South Dakota State University

Harekrishna MISRA
Institute of Rural Management Anand

Tanja MLINAR
IESEG School of Management

Luis A. MONCAYO-MARTINEZ
Instituto Tecnológico Autónomo de México (ITAM)

Egon MUELLER
Chemnitz University of Technology

Indrajit MUKHERJEE
Bengal Engineering & Science University, Shibpur

Tawanda MUSHIRI
University of Johannesburg

Ipseeta NANDA
NIIT University

Dinh Son NGUYEN
University of Science and Technology, The University of Danang

Tatsushi NISHI
Osaka University

Temel ONCAN
Galatasaray University

Sanjay Kumar PALEI
Indian Institute of Technology (BHU), Varanasi

Naraphorn PAOPRASERT
Kasetsart University

Jennifer PERCIVAL
University of Massachusetts Lowell

Alan PILKINGTON
University of Westminster

Anisur RAHMAN
Griffith University

Kem RAMDASS
University of South Africa

Edmore RANGANAI
University of South Africa

R.M. Chandima RATNAYAKE
University of Stavanger

Fernando ROMERO
University of Minho

Mojahid SAEED OSMAN
American University of Sharjah

Tomoko SAIKI
SAIKI PATENT

Karthik SANKARANARAYANAN
University of Ontario Institute of Technology

Kiyoshi SAWADA
University of Marketing and Distribution Sciences

Mohammad SHAMSUZZAMAN
University of Sharjah

Nagesh SHUKLA
University of Technology Sydney

Ali SIADAT
Arts et Metiers ParisTech

Ronnachai SIROVETNUKUL
Mahidol University

Mbuyu SUMBWANYEMBE
University of South Africa

Syafie SYAMAUN MAHMUD
King Abdulaziz University-Rabigh

Yoshinobu TAMURA
Tokyo City University

Reza TAVAKKOLI-MOGHADDAM
University of Tehran

Arnesh TELUKDARIE
University of Johannesburg

Norbert TRAUTMANN
University of Bern

Yuan-Jye TSENG
Yuan Ze University

David VALIS
University of Defence in Brno

Iwan VANANY
Institut Teknologi Sepuluh Nopember

Elise VAREILLES
Ecole Nationale Supérieure des Mines Albi

Enrico VEZZETTI
Politecnico di Torino

Yue WANG
Hang Seng Management College

Ari WIDYANTI
Industrial Engineering Dept. ITB

Seng Fat WONG
University of Macau

Haiyan XU
Institute of High Performance Computing

Keng-Chieh YANG
National Kaohsiung University of Science and Technology

Jun YANG
Beihang University

Linda ZHANG
IESEG School of Management



Table of Contents

Supply Chain Management 1

Dedicated Agility: A New Approach for Designing Production Networks <i>Günther SCHUH, Jan-Philipp PROTE, Bastian FRÄNKEN, Julian AYS, Sven CREMER</i>	1
Contractual Barriers and Energy Efficiency in the Crude Oil Supply Chain <i>Roar ADLAND, Haiying JIA</i>	6
Carbon Footprints of Construction Industries: A Global, Supply Chain-linked Analysis <i>Parinaz TOUFANI, Murat KUCUKVAR, Nuri Cihat ONAT</i>	11
An Approach for Rolling Planning of Migration in Production Networks <i>Günther SCHUH, Jan-Philipp PROTE, Marco MOLITOR, Sven CREMER</i>	17
Lead Time Quotation Under MTO and MTS Delivery Modes with Endogenous Demand <i>Erfan ASGARI, Yannick FREIN, Ramzi HAMMAMI</i>	22
Modelling the Causal Relationship Among Variables that Influencing the Capability of Dairy Supply Chain in Indonesia <i>Aries SUSANTY, N. B. PUSPITASARI, A. BAKHTIAR, N. SUSANTO, D. KURNIA</i>	27
Building Last Mile Delivery Scenarios: A Case Study of Melbourne <i>Kolawole EWEDAIRI, Prem CHHETRI, Jago DODSON, Shams RAHMAN</i>	32

Supply Chain Management 2

Review of Refrigerated Inventory Control System for Perishable Products <i>Dyah SATITI, Ahmad RUSDIANSYAH, Ratna Sari DEWI</i>	36
Supply Chain Configuration Modeling for Multi-product Multi-echelon <i>Sinta SULISTYO, Derana ADILIA, Nur Aini MASRUROH</i>	41
Supplier Selection Method: A Case-study on a Car Seat Manufacturer in Thailand <i>Naragain PHUMCHUSRI, Supasit TANGSIRIWATTANA, Poom LUANGJARMEKORN</i>	46
Improving Traceability System in Indonesian Coconut Oil Company <i>Ivan GUNAWAN, Iwan VANANY, Erwin WIDODO, Jaka MULYANA</i>	51
Vehicle Dispatch Problem with Precedence Constraints for Marine Container Drayage <i>Etsuko NISHIMURA, K. SHINTANI, A. IMAI</i>	56
An Impact-wave Analogy for Managing Cyber Risks in Supply Chains <i>Daniel SEPULVEDA ESTAY, Pablo GUERRA</i>	61

Supply Chain Management 3

Redistribution Problem of Relief Supply for Post-disasters <i>Etsuko NISHIMURA, Kentaro UCHIDA</i>	66
A Green Vehicle Routing Method for the Regional Logistics Center <i>Jun-Der LEU, Andre KRISCHKE, Yi-Ping LEE, Larry Jung-Hsing LEE, Yi-Wei HUANG</i>	71
Multi-period Maximal Covering Location Problem with Modular Facilities for Locating Emergency Facilities with Back-up Services <i>Roghayyeh ALIZADEH, Tatsushi NISHI</i>	76

Intelligent Transport Systems and its Impact on Performance of Road Freight Transport in Zimbabwe <i>Wiseman MUCHAENDEPI, Charles MBOHWA, James KANYEPE</i>	80
Supply Chain Risk Mitigation Strategies in Automotive Industry: A Review <i>Ehsan DEHDAR, Amir AZIZI, Salar AGHABEIGI</i>	84
Customer Value Chain Analysis for Sustainable Reverse Logistics Implementation: Indonesian Mobile Phone Industry <i>Hesti MAHESWARI, Gatot YUDOKO, Akbar ADHIUTAMA</i>	89
 Safety, Security and Risk Management 1	
Safety Outcomes in Small-Size and Medium-Size Metal Enterprises in Indonesia: Are They Different? <i>Nachnul ANSORI, Ari WIDYANTI, Iftikar SUTALAKSANA</i>	93
Process Safety and Performance Improvement in Oil Refineries Through Active Redundancy and Risk Assessment Method - A Case Study <i>Loganathan MADAMPATTY KRISHNASWAMY, Subhas Sarma NEOG, Sunil RAI</i>	98
Risk Assessment Among Thai and Foreign Workers in Construction Companies <i>Kosinchai PAWTHAISONG, Manutchanok JONGPRASITHPORN, Chaiporn VONGPISAL, Nantakrit YODPIJIT</i>	103
Fuzzy Risk Prioritization of the Failure Modes in Rolling Stocks <i>Behzad GHODRATI, Mohammad Javad RAHIMDEL, Amir TAGHIZADEH VAHED</i>	108
Performance Evaluation with a Z-number Data Envelopment Analysis: A Case Study of a Petrochemical Plant <i>Shohre SADEGHSA, Ali SIADAT, Reza TAVAKKOLI-MOGHADDAM, Maliheh VAEZ-ALAEI</i>	113
A Critical Review of Current Safety Assessment Method of Chemical Safety in Toys <i>Shu Lun MAK, Winnie CHIU, H. K. LAU</i>	118
Safety Barriers Against Common Cause Failure and Cascading Failure: Literature Reviews and Modeling Strategies <i>Lin XIE, Mary Ann LUNDTEIGEN, Yiliu LIU</i>	122
 Production Planning and Control	
A SPH Simulation Approach using the Carreau Model for the Free Surface Flow of Adhesives <i>Marcus RÖHLER, Vakul KUMAR, Christoph RICHTER, Gunther REINHART</i>	128
Capacity Allocation Among Suppliers in the Presence of Spot Market <i>Tarun JAIN, Jishnu HAZRA</i>	133
A Mix Integer Programming Model for Bi-objective Single Machine with Total Weighted Tardiness and Electricity Cost Under Time-of-use Tariffs <i>Bobby KURNIAWAN, Alfian Akbar GOZALI, Wei WENG, Shigeru FUJIMURA</i>	137
An Improved Multiobjective Evolutionary Algorithm for Solving the No-wait Flow Shop Scheduling Problem <i>Tsung-Su YEH, Tsung-Che CHIANG</i>	142
Multiply-connected Neuro PID Control <i>Kun-Young HAN, Hee-Hyol LEE</i>	148
As Simple as Possible but no Simpler – An Inquiry into Approximations for a Re-order Point Inventory Control Model with Gamma-distributed Demand	153

Anders THORSTENSON

Cost-model for Energy-oriented Production Control 158
Martin ROESCH, Christoph BERGER, Stefan BRAUNREUTHER, Gunther REINHART

Human Factors 1

Barriers to Flexible Work Arrangements (FWA) in Malaysian Knowledge-based Industries 163
Arnifa ASMAWI, Noor Shahaliza OTHMAN

A Study on Developing Customer Groups in Consolidated Financial Services Using Qualitative and Quantitative Analysis 168
Yoonki KIM, Kyung-Jun LEE, Joong Hee LEE, Jihwan LEE, Yong Min KIM, Huamin JIN, Jaeyoon KANG, Myung Hwan YUN

Human Factors Approach for Powered Transfemoral Protheses Conceptual Design 173
Manutchanok JONGPRASITHPORN, Nantakrit YODPIJIT, Jutamat PINITLERTSAKUN, Juthamas SIRIWATSOPON, Gary GUERRA, Teppakorn SITTIWANCHAI

Evaluation of Activation Function Capability for Intent Recognition and Development of a Computerized Prosthetic Knee 178
Manutchanok JONGPRASITHPORN, Nantakrit YODPIJIT, Gary GUERRA, Uttapon KHAWNUNAN

Effect of Coffee Intake on Heart Rate Variability and Driving Performance in Sleep-deprived Condition 183
Titis WIJAYANTO, Tasya ALMA, Bonifatius Bramantya WISNUGRAHA, Syam Rachma MARCILLIA, Galang LUFITYANTO

Dealing with Aging and Multigeneration Workforce Topics at Top Global Companies: Evidence from Public Disclosure Information 187
Igancio CASTELLUCCI, Pedro AREZES, Martin LAVALIERE, Nelson COSTA, Olivia DADALT, Joseph COUGHLIN

User Experience Analysis in Industry 4.0 - The Use of Biometric Devices in Engineering Design and Manufacturing 192
Yuri BORGIANI, Erwin RAUCH, Lorenzo MACCIONI, Benedikt Gregor MARK

Reliability and Maintenance Engineering 1

Reliability Analysis for MOSFET Based on Wiener Process 197
Huiling ZHENG, Houbao XU

Lease-oriented Opportunistic Maintenance for Series-parallel Systems by Integrating Capacity Balancing 202
Bowen SUN, Tangbin XIA, Ya SONG, Wenyu GUO, Lifeng XI

Improved Lease-oriented Opportunistic Maintenance for Two-machine One-buffer System under Product-service Paradigm 207
Wenyu GUO, Tangbin XIA, Guojin SI, Bowen SUN, Ershun PAN

Condition-based Selective Maintenance for Multicomponent Systems Under Environmental and Energy Considerations 212
Abdelhakim KHATAB, El-Houssaine AGHEZZAF, Claver DIALLO, Uday VENKATADRI

Mining System Degradation Assessment Based on Mathematical Analysis 217
David VALIS, Jakub GAJEWSKI, Kamila HASILOVA, Marie FORBELSKA

System Condition Assessment Based on Mathematical Analysis 222
David VALIS, Libor ZAK, Zdenek VINTR

ACO-based Parallel Machine Scheduling Considering Both Setup Time and Run-based Preventive Maintenance with Reliability Constraints	227
<i>Siqi CHEN, Liya WANG</i>	

Reliability and Maintenance Engineering 2

Optimum Preventive Maintenance Policy for a Mechanical System Using Semi-markov Method and Golden Section Technique	232
<i>Girish KUMAR, J.P. VARGHESE</i>	
Remaining Fatigue Life Prediction of Topside Piping Using Response Surface Models	237
<i>Arvind KEPRATE, R.M. Chandima RATNAYAKE</i>	
Application of Prognostics and Health Management to Low Demand Systems: Use of Condition Data to Help Determine Function Test Interval	242
<i>Pengyu ZHU, Jayantha P. LIYANAGE</i>	
Reliability Modeling and Analysis of Nuclear Power System with Common Signal Based on Goal-oriented (GO) Method	247
<i>Yuan-Yuan YANG, Hui-Na MU, Guang-Liang CHEN, Xiao-Jian YI, Hong-Mei YAN, Chen LIU</i>	
Low Demand Safety Instrumented System: Update of Function Test Intervals with Layer of Protection Analysis in the Operational Phase	252
<i>Pengyu ZHU, Jayantha P. LIYANAGE</i>	
Decision Support Tools for Preventive Maintenance Intervals and Replacement Decisions of Engineering Assets	257
<i>Madhu MENON, Gopinath CHATTOPADHYAY, Ray BEEBE</i>	
Maintenance Planning Based on Reliability Assessment of Multi-state Multi-component System	262
<i>Niketa JAIN, Ajay Pal Singh RATHORE, Rakesh JAIN, Om Prakash YADAV</i>	

Healthcare Systems and Management 1

Inventory Management Information System in Blood Transfusion Unit	268
<i>Fitra LESTARI, Ulfah ULFAH, Fitri ROZA APRIANIS, Suherman SUHERMAN</i>	
Modified Model of Radiographer Scheduling Problem for Sequential Optimization	273
<i>Toshiyuki MIYAMOTO, Kuniyuki HIDAKA</i>	
Women in Informatics Engineering Career: Perspective from Hofstede Cultural Dimension and Dayak Tribe's Cultural Values	278
<i>Ika WINDIARTI, Agung PRABOWO, Muhammad Haris QAMARUZZAMAN, Sam'ani SAM'ANI</i>	
On a Discrete-time Epidemic Model based on a Continuous-time SEIR Model Under Feedback Vaccination Controls	283
<i>Marta FERNANDEZ-FERNANDEZ, Santiago ALONSO-QUESADA, Manuel DE LA SEN, Aitor J. GARRIDO</i>	
Training System for the Medical Procedure of Cannulation	288
<i>Olga Katherine VERA BONILLA, Maria del Mar CHAVARRO CEBALLOS, Andres Felipe BARCO SANTA, Elise VAREILLES</i>	
Managing Product Recalls in Healthcare Supply Chain	293
<i>Raja JAYARAMAN, Fatima ALHAMMADI, Mecit Can Emre SIMSEKLER</i>	
Pareto Optimization for Hospital Alliance Reverse Referral Decision	298
<i>De TENG, Na LI</i>	

Engineering Education and Training

The Concept of Systems Thinking Education- Moving from the Parts to the Whole <i>Sigal KORAL KORDOVA, Moti FRANK</i>	303
Using QFD to Normalize a Culture of Innovation in an Engineering SME <i>Pearse O'GORMAN, Margaret MORGAN, Rudy VAN MERKOM</i>	307
Continuous Improvement of Industrial Engineering Education Based on PDCA Method and Structural Importance <i>Yaqi GUO, Hengyi GAO, Zhiqiang CAI, Shuai ZHANG, Fangyu HU</i>	311
Effect of Needham Model Based Interactive Multimedia Material Towards Students' Achievement in Digital Logic Gates <i>M.F. LEE, S.N. MAT YUSOFF</i>	316
An Approach to Integrate Skills Development in Open Distance Learning (ODL) Environment: Part 2 <i>Tlotlollo HLALELE, Mothibeli PITA, S. SUMBANYAMBE</i>	321
Competency-based Assessment of Industrial Engineering Graduates: Basis for Enhancing Industry Driven Curriculum <i>Ryan Jeffrey CURBANO, S. G. Y. MADRID, C. T. NARVACAN, J. R. PUENTENEGRA</i>	326
Training in Maintenance Engineering. Curricula Proposal <i>Miguel DIAZ-CACHO, Jorge MARCOS-ACEVEDO, Javier SANCHEZ-REAL, Salah CHIKH</i>	331

Technology and Knowledge Management 1

Green Manufacturing's Adoption by Indonesian SMEs: A Conceptual Model <i>Ira SETYANINGSIH, Nurul INDARTI, Wakhid CIPTONO</i>	336
A Database Administration Tool to Model the Configuration Projects <i>Sara SHAFIEE, Steffan Callesen FRIIS, Lukasz LIS, Ulf HARLOU, Yves WAUTELET, Lars HVAM</i>	341
An Application of Agent-based Modeling and Simulation in Tacit Knowledge Transfer Effectiveness and Individual Performance through the Consideration of Feedback Mechanism <i>Fadillah RAMADHAN, Afrin Fauzya RIZANA, Rayinda Pramudya SOESANTO, Amelia KURNIAWATI, Iwan Inrawan WIRATMADJA</i>	346
Application of Last Planner® System in Product Concept Development Phase: Use of Lean Concepts in Academic Project Work <i>Prashanth SIVAGANESH, R.M. Chandima RATNAYAKE</i>	351
Project Success as a Function of Organizational Knowledge Management <i>Uriel ISRAELI, Amnon GONEN</i>	356
How Much "Talent" is Needed for Organizational Learning? A Study of Labor Market Entrants in an Innovation-oriented Country <i>Mait RUNGI</i>	361
Foundation of Project Interdependencies: Perspective of Organizational Theories <i>Mait RUNGI</i>	366

Systems Modeling and Simulation 1

A Detailed Modeling and Comparative Analysis of Hysteresis Current Controlled Vienna Rectifier and Space Vector Pulse Width Modulated Vienna Rectifier in Mitigating the Harmonic Distortion on the Input Mains	371
---	-----

<i>Hari Charan NANNAM, Atanu BANERJEE</i>	
Monte Carlo Simulation Forecasting of Maritime Ferry Safety and Resilience <i>Ewa DABROWSKA, J. SOSZYŃSKA-BUDNY</i>	376
JIS: Pest Population Prognosis with Escalator Boxcar Train <i>Kin-Woon YEOW, Matthias BECKER</i>	381
Modeling the Dynamics of an Agile Scrum Team in the Development of a Single Software Project <i>Phoebe Mae CHING, Jose Edgar MUTUC</i>	386
The Stowage of Containers for Inland Shipping: A System for Maximizing Containers Allocation and Meeting Stability Requirements <i>Stefano FAZI</i>	391
Creation of Lattice Structures for Additive Manufacturing in CAD Environment <i>Dinh Son NGUYEN, Thanh Hai Tuan TRAN, Duc Kien LE, Van Than LE</i>	396
Operational Aircraft Routing Problem: Some Insights in the Capacitated Maintenance Resources <i>Miner ZHONG, Felix T.S. CHAN, S. H. CHUNG</i>	401
Operations Research 1	
Generic Framework for Stress Testing of Real-time Systems <i>Afshan NASEEM, Asad Waqar MALIK, Shoab Ahmed KHAN</i>	406
A Distributionally Robust Chance Constrained Model to Hedge Against Uncertainty in Steelmaking-continuous Casting Production Process <i>Shengsheng NIU, Shiji SONG, Jian-Ya DING</i>	411
Capacitated Assortment Optimization with Pricing under the Paired Combinatorial Logit Model <i>Daihan ZHANG, Zhenghe ZHONG, Chuning GAO, Rui CHEN</i>	417
A Lagrange Multiplier-based Regularization Algorithm for Image Super-resolution <i>Bai LI, Lixin MIAO, Canrong ZHANG, Wenming YANG</i>	422
A Genetic Algorithm for Generating Travel Itinerary Recommendation with Restaurant Selection <i>Budhi WIBOWO, Monica HANDAYANI</i>	427
A Continuous-Time Unit-Based MILP Formulation for the Resource-Constrained Project Scheduling Problem <i>Mario GNÄGI, Adrian ZIMMERMANN, Norbert TRAUTMANN</i>	432
A Rule-based Greedy Algorithm to Solve Stowage Planning Problem <i>Dalia RASHED, Mohamed GHEITH, Amr ELTAWIL</i>	437
Operations Research 2	
An MILP Model for the Internal Audit Scheduling Problem <i>Volkan YILDIRIM, M. Ebru ANGÜN, Temel ÖNCAN</i>	442
Stochastic Storage/retrieval Scheduling Considering Shuttle Failure in Multi-shuttle Automated Storage and Retrieval System <i>Jun WEN, Xinglu LIU, Peng YANG</i>	447
A Continuous-Time MILP Formulation for the Multi-Mode Resource-Constrained Project Scheduling Problem <i>Mario GNÄGI, Tom RIHM, Norbert TRAUTMANN</i>	452

Exact Method for Single Vessel and Multiple Quay Cranes to Solve Scheduling Problem at Port of Tripoli - Lebanon <i>Ali SKAF, Sid LAMROUS, Zakaria HAMMOUDAN, Marie-Ange MANIER</i>	457
Mathematical Modelling for a Semi-obnoxious Inverse Line Location Problem <i>Mehdi GOLPAYEGANI, Haleh MORADI, Reza TAVAKKOLI-MOGHADDAM</i>	462
Aggregate Production Framework for Efficiency Analysis and its Implementation by Linear Programming <i>Soobin CHOI, Jaedong KIM</i>	467
 Service Innovation and Management 1	
The Effect of Owner Creativity on Organizational Creativity: Empirical Evidence from Surakarta Indonesia <i>Retno INDRIARTININGTIAS, Budi HARTONO, Subagyo SUBAGYO</i>	473
A Study of Continuance Intention to Adopt Cloud Services: The Moderating Effect of Users' Motivation <i>Chan-Sheng KUO, Yowei KANG</i>	477
Service Innovation in Retail Industry: What Can We Learn from Target? <i>Rocky REYNALDO, Augustina Asih RUMANTI, Iwan Inrawan WIRATMADJA</i>	482
Benefit Segmentation of Online Customer Reviews Using Random Forest <i>Kenjiro TORIZUKA, H. OI, Humiaki SAITOH, Syohei ISHIZU</i>	487
Government Subsidy, Industry-university-research Collaborative Innovation and Resources Allocation Efficiency <i>Miao LI, Yuan HUANG</i>	492
The Use of Design-science to Define Information Content Requirements for IT Service Catalogs <i>Franziska SCHORR, Lars HVAM</i>	497
 Big Data and Analytics 1	
Sentiment Analysis of Airport Customer Reviews <i>Arian DHINI, Dita Anggraeni KUSUMANINGRUM</i>	502
Understanding Adoption of Big Data Analytics in China: From Organizational Users Perspective <i>Kin Meng SAM, Chris CHATWIN</i>	507
A Local-branching Heuristic for the Best Subset Selection Problem in Linear Regression <i>Tamara BIGLER, Oliver STRUB</i>	511
Early Detection of Events as a Decision Support in the Milk Collection Planning <i>Atefe ZAKERI, Morteza SABERI, Omar KHADEER HUSSAIN, Elizabeth CHANG</i>	516
Smart City Application and Analysis: Real-time Urban Drainage Monitoring by IoT Sensors: A Case Study of Hong Kong <i>Kin Lok KEUNG, Carman Ka Man LEE, Kam Hung NG, Chun Kit YEUNG</i>	521
Cultivating Growth and Radical Innovation Success in the Fourth Industrial Revolution with Big Data Analytics <i>Magnus PENKER, Soo Beng KHOH</i>	526
Clustering Subway Station Arrival Patterns Using Weighted Dynamic Time Warping <i>Rui WANG, Nan CHEN, Chen ZHANG</i>	531

Service Innovation and Management 2

Event-driven Architecture for Sensor Data Integration for Logistics Services <i>Jens LEVELING, Luise WEICKHMANN, Christian NISSEN, Christopher KIRSCH</i>	536
Reaching Project Success Through Vision and Artifact and the Mediating Role of Team Spirit <i>Sayed Muhammad FAWAD SHARIF, Naiding YANG, Fouzia KANWAL, Sayed Kifayat SHAH</i>	541
A Human Centered Design Framework to Support Product-service Systems <i>Thomson Chi Shing WONG, Moon Kyoung JANG, Seung Ki MOON, Zhong Yang CHUA, Haining ZHANG, Hyung Sool OH</i>	545
Marketing Management Challenges – A Nordic Small and Medium Size Enterprises (SMEs) Perspective <i>Yonas Zewdu AYELE, Abbas BARABADI</i>	550
Consolidating Orders in a Crowdsourcing Delivery Network <i>Daniel Y. MO, Yue WANG, Nicole CHAN</i>	555
Co-creation of Value Using Social Media in the Service Industry: An Empirical Case Study of Service Innovation in a Banking and Finance Company <i>Asle FAGERSTRØM, Ravi VATRAPU, J. OTRE STØRKSEN</i>	560
Innovation Models for Public and Private Organizations: A Literature Review <i>Tariq AL HAWI, Imad ALSYOUF, Mickael GARDONI</i>	565

Quality Control and Management

A Comparative Study of Several Group Runs Type Control Schemes <i>Zhi Lin CHONG, Jing Yi WONG, Michael Boon Chong KHOO, Sok Li LIM, Wai Chung YEONG</i>	570
Benchmarking Quality Management Maturity in Industry <i>Bheki MAKHANYA, Hannelie NEL, Jan Harm PRETORIUS</i>	575
Testing the ISO 9001:2015 Process Model: An Australasian Empirical Study <i>Nisansala PALLAWALA, Nihal JAYAMAHA, Nigel GRIGG</i>	580
Assessment of Quality of Service at the Main Laboratory of the LAB Aimed at Satisfying Internal Customer Needs <i>Sambil Charles MUKWAKUNGU, Eric BAKAMA, Alice Kabamba LUMBWE, Magaly Madeleine BOLIPOMBO, Dorcas NIATI, Kidoge IBRAHIMU, Jonathan Eljadael KASONGO, Charles MBOHWA</i>	586
Effects of Suggestion System on Continuous Improvement: A Case Study <i>Sorina MOICA, Cristina VERES, Liviu MARIAN</i>	592
Total Quality Management: A Framework for Quality Improvement in Indian Manufacturing Small and Medium Enterprises <i>R. KAJA BANTHA NAVAS, S. PRAKASH, A. John RAJAN, Subramaniam ARUNACHALAM</i>	597

Project Management 1

Hybridization of Development Projects Through Process-related Combination of Agile and Plan-driven Approaches <i>Michael RIESENER, Christian DÖLLE, Johanna AYS, Julian AYS</i>	602
Risk of Quantity Increase in Vietnamese Construction Projects <i>Soo Yong KIM, Ha Duy KHANH, Van Thanh BINH</i>	607

A Literature Review on Approaches for the Retrospective Utilisation of Data in Engineering Change Management <i>Armin TALE-YAZDI, Niklas KATTNER, Lucia BECERRIL, Udo LINDEMANN</i>	612
Data Analysis in Engineering Change Management – Improving Collaboration by Assessing Organizational Dependencies Based on Past Engineering Change Information <i>Niklas KATTNER, Jan MEHLSTAEUBL, Lucia BECERRIL, Udo LINDEMANN</i>	617
Dimensioning a Product Development Project Portfolio Using a Closed Queueing Network <i>Jesper FINK ANDERSEN, Carsten LAURIDSEN, Bo Friis NIELSEN</i>	622
The Contextual Utility of Agile Project Management Maturity <i>Budi HARTONO, Dennis KUNARSITO, Citra NUDIASARI</i>	627
A BIM-based Labor Crew Moving Path Obstruction Detection Approach <i>Qiankun WANG, Zeng GUO, Qianyao LI, Tingting MEI, Shi QIAO, Weiwei ZUO</i>	632
 Project Management 2	
Decision Criteria for Contractor Selection in Construction Industry: A Literature Review <i>Maria Creuza BORGES DE ARAUJO, Luciana ALENCAR, Caroline MOTA</i>	637
A Review of Methods, Tools and Techniques Used for Risk Management in Transport Infrastructure Projects <i>Indra GUNAWAN, Tiep NGUYEN, Leonie HALLO</i>	641
The Influence of IM Use on Job Satisfaction in Cross-organizational Projects <i>Ziyue WANG, Yali ZHANG, Jun SUN, Chrissie Diane TAN, Menghua LU</i>	646
Key Influencing Factors for Cross-organizational R&D Project Stakeholder Management <i>Chrissie Diane TAN, Yali ZHANG, Jun SUN, Ziyue WANG, Ganggang ZHENG</i>	651
Robust Project Scheduling with Unreliable Resources: A Variable Neighbourhood Search Based Heuristic Approach <i>Ripon K CHAKRABORTTY, Alireza ABBASI, Michael J RYAN</i>	656
 Manufacturing Systems 1	
Simultaneous Balancing and Buffer Allocation to Serial Lines with Bernoulli Stations <i>Wenchong CHEN, Hongwei LIU, Wei LIU</i>	661
Enhancement of the Design Process for Manufacturing Systems via a Multi-criteria Evaluation Method Creating a Control Loop for Guided Improvement <i>Michael FELDMETH, Egon MÜLLER</i>	666
SMED in the North American Secondary Wood Products Industry <i>Urs BUEHLMANN, Enis KUCUK</i>	671
Hybridizing MJF Based Additive Layer and CNC Supported Subtractive Manufacturing for Enhancing Productivity in PD Design Iterations <i>R.M. Chandima RATNAYAKE</i>	675
Effect of Temperature on the Quality of Welding Beads Deposited with CMT Technology <i>Pascal ROBERT, Matthieu MUSEAU, Henri PARIS</i>	680
Production Management System for Small and Medium Sized Manufacturing Enterprises <i>Lei WANG, Peng LIU, Shengqian JIANG, Yiming XUE, Kun WANG, Xiangnan LI</i>	685

Manufacturing Systems 2

An Application of Just-in-time as a Strategy for Competitive Advantage: The Case of a Non-alcoholic Company in South Africa <i>Sambil Charles MUKWAKUNGU, Eric BAKAMA, Magaly Madeleine BOLIPOMBO, Charles MBOHWA</i>	690
Environmental Management Systems in Thai Small and Medium-Sized Manufacturing Firms <i>Pittawat UEASANGKOMSATE, Chidchanok WONGSUPATHAI</i>	695
Similarity-search and Prediction Based Process Parameter Adaptation for Quality Improvement in Interlinked Manufacturing Processes <i>Jacqueline SCHMITT, Jochen DEUSE</i>	700
An Integer Linear Programming Approach for the Combined Cell Layout Problem <i>Miguel F. ANJOS, Philipp HUNGERLAENDER, Kerstin MAIER</i>	705
Reliability Analysis for a Divisional Seru Production System with Stochastic Capacity <i>Xinzi HAN, Zhe ZHANG, Yong YIN</i>	710
Predicting the Tensile Strength of Extrusion-blown High Density Polyethylene Film Using Machine Learning Algorithms <i>Firas ALHINDAWI, Safwan ALTARAZI</i>	715
Investigation of Assessment and Maturity Stage Models for Assessing the Implementation of Industry 4.0 <i>Marco UNTERHOFER, Erwin RAUCH, Dominik T. MATT, Salinee SANTITEERAKUL</i>	720

Engineering Economy and Cost Analysis

A Systematic Literature Review of the Implementation of Cost of Quality <i>Bheki MAKHANYA, Hannelie NEL, Jan Harm PRETORIUS</i>	726
Integrated Controlling Tool with Plan-fact Analysis <i>Zoltan SEBESTYEN, Tamas TOTH</i>	731
Decision Making on Sustainable Forest Harvest Production Using Goal Programming Approach (Case Study: Iranian Hyrcanian Forest) <i>Soma ETEMAD, Soleiman MOHAMMADI LIMAEI, Leif OLSSON, Rasoul YOUSEFPOUR</i>	736
Operational Management of the Microgrid System for the Energy-sensitive Manufacturing Plant <i>Weiwei CUI, Yujie YANG</i>	741
Analysis on Influence Factors of Enterprises' Costs for Compliance to Consumer Product Standard <i>Xia LIU, Ruan LI, Xiaolei FENG, Bisong LIU, Qian WU</i>	746
American Productivity Center Method for Measuring Productivity in Palm Oil Milling Industry <i>Fitra LESTARI, Irsan NUARI, Vera DEVANI</i>	754

Decision Analysis and Methods 1

A Two-layer Data Envelopment Analysis Model for Sustainable Performance Evaluation <i>Willy ZALATAR, Eppie CLARK</i>	758
A Hybrid Approach Using SWOT and AHP to Prioritize the Factors for Indigenous Production of Automobiles: A Case of Pakistani Automotive Industry <i>Yasir AHMAD, Zaid BIN KHALID</i>	763

World-Class Engineering: Designing for Quality, Reliability, Maintenance, and Supply Chain Management Using the Analytic Hierarchy Process <i>Travis C. MALLETT</i>	768
A Predictive Approach to Define the Best Forecasting Method for Spare Parts: A Case Study in Business Aircrafts' Industry <i>Reza BABAJANIVALASHEDI, Armand BABOLI, Muhammad Kashif SHAHZAD, Romy TONADRE</i>	773
A New Approach to Integrate Resilience Engineering and Business Process Re-engineering Design <i>Maliheh VAEZ-ALAEI, Armand BABOLI, Reza TAVAKKOLI-MOGHADDAM</i>	778
A Methodology to Integrate Artificial Intelligence with the Design Structure Matrix Approach <i>Chuks MEDOH, Arnesh TELUKDARIE</i>	783
Prediction of Critical Infrastructure Accident Losses of Chemical Releases Impacted by Climate-weather Change <i>Magda BOGALECKA, Krzysztof KOŁOWROCKI</i>	788

Decision Analysis and Methods 2

Data-driven Defense Strategies for an Infrastructure Network against Multiple Interdictions <i>Jing JIANG, Xiao LIU</i>	793
Solving the Bidirectional Multi-Period Full Truckload Vehicle Routing Problem with Time Windows and Split Delivery for Bulk Transportation Using a Covering Model <i>Apichit MANEENGAM, Apinanthana UDOMSAKDIGOOL</i>	798
Using Multicriteria Decision Making Methods to Manage Systems Obsolescence <i>Imen ZAABAR, Yvan BEAUREGARD, Marc PAQUET</i>	803
Assessing Information Security Risk Using Markov Chain <i>Daniel TSE, Xiaoting PAN, Yuan ZONG, Jiayi LIU, Qinyan YANG</i>	808
A Comparison of Two Location Models in Optimizing the Decision-making on the Relocation Problem of Post Offices at Narvik, Norway <i>Hao YU, Wei Deng SOLVANG</i>	814
The Effect of Decision Maker's Risk Attitude on Inventory Policy: An Empirical Studies <i>Nur Aini MASRUOH, Elok PITALOKA, Wangi PANDAN SARI</i>	819
Quantitative Assessment of Economic, Social and Environmental Impacts of Critical Infrastructure Disruptions <i>Agnieszka BLOKUS</i>	824

Information Processing and Engineering

Latent Variable Structured Bayesian Network for Cyanobacterial Risk Pre-control <i>Peng JIANG, X. LIU, J. ZHANG, S. H. TE, K. Y. H. GIN</i>	829
Identifying and Defining Knowledge-work Waste in Product Development: A Case Study on Lean Maturity Assessment <i>Felix P SANTHIAPILLAI, R.M. Chandima RATNAYAKE</i>	834
Regional Freight Volume Forecasting with Incomplete Data of Origin/Destination Freight Volumes <i>Jiahao LIU, Guangxin OU, Zhaoxia GUO</i>	839
Application of Industry 4.0 Towards Achieving Business Sustainability <i>Megashnee MUNSAMY, Arnesh TELUKDARIE</i>	844

Enterprise Definition for Industry 4.0 <i>Arnesh TELUKDARIE, Michael SISHI</i>	849
Classification System for Egyptian Heritage Buildings <i>Mohamed MARZOUK, Noha SALEEB, M. M. ELSHARKAWY, Asmaa EID, Mohamed ALI, Mahmoud METAWIE</i>	854
Development of Halal Audit Information System (HAIS) and its Implementation Evaluation Based on Time–cost Trade–off Using Integer Linear Programming (ILP) <i>Iwan VANANY, Diesta Iva MAFTUHAH, Adi SOEPRIJANTO, Faiz Rahman ARIFIN</i>	859
 Supply Chain Management 4	
Understanding Influential Factors in Selecting Sustainable Third-party Logistics Providers: An Interpretive Structural Modeling and MICMAC Analysis <i>Xiangce MENG, Zhaojun YANG, Jun SUN</i>	864
Scenarios in Intermodal Transportation Planning <i>Wichitsawat SUKSAWAT NA AYUDHYA</i>	869
Inventory Analysis on a Single-Echelon Supply Chain System by Considering Carbon Emissions <i>Petrus Setya MURDAPA, I. Nyoman PUJAWAN, Putu Dana KARNINGSIH, Arman Hakim NASUTION</i>	874
Application of Mathematical Model for Raw Material Storage Management <i>Chompoonoot KASEMSET, Aunchalee PETCHALALAI</i>	879
Biomass Supply Chain Design, Planning and Management: A Review of Literature <i>Fitri AGUSTINA, Iwan VANANY, Nurhadi SISWANTO</i>	884
Forecasting of Used Product Returns for Remanufacturing <i>Mohammed Woyeso GEDA, C.K. KWONG</i>	889
Supplier Integration Roles in New Product Development: The Automotive Suppliers' Perspective <i>Kanagi KANAPATHY, Kooi Onn CHU</i>	894
 Supply Chain Management 5	
Locating Facility with Multi-period and Dynamic Demand: A Case Study of Chemical Fertilizer Store in Thailand <i>Natdabhorn SAPKHOKING, Arhit APICHOTTANAKUL, Komkrit PITIRUEK</i>	899
Alignment Between Enterprise Green Supply Chain and Green Information System: An Analysis of Four Cases <i>Zheng WU, Zhaojun YANG, Jun SUN, Yu ZOU</i>	904
Decision Support System of the Single Track Railway Rescheduling with Predictive Delay <i>Ahmad RUSDIANSYAH, Kurnia ISWARDANI</i>	909
The Identification of Supplier Selection Criteria Within a Risk Management Framework Towards Consistent Supplier Selection <i>Tumelo LESISA, Annlize MARNEWICK, Hannelie NEL</i>	913
Optimal Vehicle Routing for Parcel Delivery with Considering Two Time Periods <i>Gitae KIM</i>	918
Revenue and Cost Sharing Mechanism for Effective Remanufacturing Supply Chain <i>Tatsuya INABA</i>	923
The Robustness of Warranty: Wholesale Pricing Contract vs Two-part Tariff <i>Houping TIAN, Qingqing YAN, Changxian LIU</i>	928

Project Management 3

- Development and Evaluation of a Workshop Concept to Support Tailoring of Complex Product Development Processes 933
Christoph HOLLAUER, Julia RAST, Udo LINDEMANN
- Scrum Agile Project Management Methodology Application for Workflow Management: A Case Study 938
Laura CARNEIRO, Ana Carolina SILVA, Luciana ALENCAR
- The Mediating Effect of Knowledge Internalization on the Relationship Between Dual Learning Behaviors and Technological Innovation Performance in the High-tech Enterprises 943
Fangmei WANGDU, Naiding YANG, Sayed Muhammad FAWAD SHARIF
- Visualised Decision Support in Industrial Project Monitoring and Control 948
Fan LI, François VERNADAT, Ali SIADAT, Li ZHENG
- Assessing the Agility of Teams within Mechatronic Product Development 952
Lucia BECERRIL, Christoph HOLLAUER, Udo LINDEMANN
- The Role of Participation in the Factory Planning Process 957
Uwe DOMBROWSKI, Alexander KARL, Christoph IMDAHL

Supply Chain Management 6

- Sustainable Dynamic Pricing for Perishable Food with Stochastic Demand 961
Ghada MOUSTAFA, Noha GALAL, Khaled EL-KILANY
- Who Has More Incentive to Make Sustainable Investment, Supplier or Manufacturer? 966
Qian YUAN, Xiutian SHI
- Supplier Selection Model Development for Modular Product with Substitutability and Controllable Lead Time 970
Yosi Agustina HIDAYAT, Tota SIMATUPANG
- Factors Affecting Sustainable Supply Chain Management: The Indian Steel Sector 976
Dayal S. PRASAD, Rudra P. PRADHAN, Kunal GAURAV, Saurav DASH
- An Incentive-based Bi-level Optimization Model for Collaborative Green Product Line Design 981
Shuang MA, Songlin CHEN, Xiaotian CAI

Safety, Security and Risk Management 2

- Critical Infrastructure Impacted by Climate Change Safety and Resilience Indicators 986
Krzysztof KOŁOWROCKI, Joanna SOSZYNSKA-BUDNY, Mateusz TORBICKI
- Critical Infrastructure Impacted by Operation and Climate Change Safety and Resilience Indicators 991
Krzysztof KOŁOWROCKI, Joanna SOSZYNSKA-BUDNY, Mateusz TORBICKI
- Longtime Prediction of Climate-weather Change Influence on Critical Infrastructure Safety and Resilience 996
Mateusz TORBICKI
- Information Privacy Practices in Organizations: Activities, Knowledge and Skill Requirements for Information Technology Professionals 1001
Yasaman ATEFI MONFARED, Younes BENSLIMANE, Zijiang YANG

On Context, Issues, and Pitfalls of Expert Judgement Process in Risk Assessment of Arctic Offshore Installations and Operations 1006
Masoud NASERI, Abbas BARABADI

Food Safety and Halal Food Risks in Indonesian Chicken Meat Products: An Exploratory Study 1011
Hana Catur WAHYUNI, Iwan VANANY, Udisubakti CIPTOMULYONO

IMU Based Real Time Underground Soil Movement Detection System: An Illustrative Investigation 1016
R. M. WEERASINGHE, D. BUDDIKA, R.M. Chandima RATNAYAKE

Human Factors 2

Impact of Socioeconomic Factors on the Levers Influencing Households' Participation in Recycling Programs in Zambia 1021
Bupe G. MWANZA, Arnesh TELUKDARIE, Charles MBOHWA

Evaluation of Physical and Motor Function in an Aging Female Population – Preliminary Results 1026
Marek BURES, Jana BENESOVA, Martin KABA

Age-related Differences in Work Motivations: The Case of SMEs 1031
Riitta FORSTEN-ASTIKAINEN, Susanna KULTALAHTI, Matti MUHOS

What Humans Act in Robotic Surgery 1035
Fabio FRUGGIERO, Marcello FERA, Alfredo LAMBIASE, Salvatore MIRANDA

The Influence of Family on Self-reflexive and Emotional Antecedents of the Transformational Leader 1041
Lirios ALOS-SIMO, Antonio VERDU-JOVER, Jose Maria GOMEZ-GRAS, Marina ESTRADA-DE-LA-CRUZ

Risk Reduction Among Adult Walker Users: An Ergonomic Innovation 1046
Ezra C. GODILANO, Edgardo M. BALDOVINO JR., Jeziel Abbigael D. CAHENDE, Marielle B. TERRIBLE

WMSD Risk Reduction Among Grocery Shoppers and Clerks by Redesigning Double Basket Shopping Carts 1051
Ezra C. GODILANO, Joshua John G. ALMORO, Al John D.P. BULAHAN, Edward Kenneth Allen C. GARCIA

Intelligent Systems 1

Towards a Knowledge based Support for Risk Engineering When Elaborating Offer in Response to a Customer Demand 1056
Rania AYACHI, Delphine GUILLON, Francois MARMIER, Elise VAREILLES, Michel ALDANONDO, Thierry COUDERT, Laurent GENESTE, Yvan BEAUREGARD

A Cooperative Multi-agent-based Musical Scoring System for Tsugaru and Nambu Shamisen 1061
Juichi KOSAKAYA, Reiko KAWAMORITA, Ming-Fang HSU

Contact Coordinate Measurements of Free-form Surfaces: A FIS for Optimal Distribution of Measurement Points 1068
Marek MAGDZIAK, R.M. Chandima RATNAYAKE

Particle-swarm Krill Herd Algorithm 1073
Gai-Ge WANG, Wenyin GONG, Xiaobo LIU, Danyu BAI, Teng REN, Xuesong YAN

Industrial Smart Services: Types of Smart Service Business Models in the Digitalized Agriculture 1081
Achim KAMPKER, Philipp JUSSEN, Benedikt MOSER

Construction Resource Localization Based on UAV-RFID Platform Using Machine Learning Algorithm 1086
Daeyoun WON, Man-Woo PARK, Seokho CHI

Industry 4.0 in Practice – Identification of Industry 4.0 Success Patterns 1091
Jörg PUCHAN, Alexander ZEIFANG, Jun-Der LEU

Intelligent Systems 2

Combining IOT and Android APP System for Upper Limb Stroke Rehabilitation 1096
Keng-Chieh YANG, Chia-Hui HUANG, Chieh-Yow CHIANGLIN

Traffic Voting System to Achieve the Balance Between Privacy and Trip Chain Data Acquisition 1101
Wentian CHEN, Kai ZHANG, Zhiheng LI

A Predictive Model for Forecasting Spare Parts Demand in Military Logistics 1106
Hanjun LEE, Jaedong KIM

Advanced Automation for SMEs in the I4.0 Revolution: Engineering Education and Employees Training in the Smart Mini Factory Laboratory 1111
Luca GUALTIERI, Rafael ROJAS, Giovanni CARABIN, Ilaria PALOMBA, Erwin RAUCH, Renato VIDONI, Dominik T. MATT

A Real Time Stare in Market Strategy for Supply Chain Financing Pledge Risk Management 1116
Benhe GAO, Qian ZHOU, Shigang LI, Xinglu LIU

Involving the Manufacturing System within its Planning Phase 1120
Matthias BARTELT, Bernd KUHLENKÖTTER

Reliability and Maintenance Engineering 3

Environmental Sustainability in Maintenance Management of Public Transport Systems: Literature Review 1125
Iyad ALAWAYSHEH, Imad ALSYOUF

Reliability Assessment for Multi-area Load Frequency Control Systems with Degraded Components 1130
Zhiying WU, Huadong MO, Junlin XIONG

Spectral Graph Wavelet based Component Clustering for System Reliability Analysis 1135
Ping ZHANG, Xiaoyan ZHU

Preparation of Preventive and Predictive Maintenance Guidelines for Emulsion Preparation and Processing Plant Using Risk Management Techniques 1140
Dushan I. JAYASINGHE

Reliability Analysis of the Crude Oil Transfer System in the Oil Port Terminal 1145
Agnieszka BLOKUS, B. KWIATUSZEWSKA-SARNECKA

Debugging Process Oriented Software Reliability Models and Their Goodness-of-Fit 1150
Shinji INOUE, Shigeru YAMADA

Mixture Lognormal Cox Regression Repair Model for Prediction of the Repair Time 1155
Yonas Zewdu AYELE, Abbas BARABADI, Fuqing YUAN

Healthcare Systems and Management 2

Preoperative Analysis for Clinical Features of Unsuspected Gallbladder Cancer Based on Random Forest 1160
Zhen ZHANG, Na LI, Hengyi GAO, Zhiqiang CAI, Shubin SI, Zhimin GEMG

Developing Customer Perception Based Organization Performance Measurement Framework for Healthcare Service <i>I. Gede Mahatma Yuda BAKTI, Tri RAKHMAWATI, Sih DAMAYANTI, Sik SUMAEDI, Medi YARMEN</i>	1165
Data Accessibility for Biotech and Medicine Industries: A Cross-stakeholder Perspective <i>Zih-Han WANG, Wei JENG</i>	1170
‘Strategy Making’, Not Re-engineering: Thinking Ahead, Again, and Across for Process Innovation in Home Care <i>Desmond WONG, Yee Lin HIEW</i>	1175
A Bi-objective Credibility-based Fuzzy Mathematical Programming Model for a Healthcare Facility Location-network Design Problem <i>Reza TAVAKKOLI-MOGHADDAM, Pooya POURREZA, Ali BOZORGI-AMIRI, Nastaran OLADZAD</i>	1181
Implementing and Using New Information Technology in Hospital Logistics <i>D. KRITCHANCHAI, Per ENGELSETH, Sirirat SRISAKUNWAN</i>	1186
Design and Development of a Prototype for Measuring Range of Motion <i>Manutchanok JONGPRASITHPORN, Nantakrit YODPIJIT, Thachamaporn CHANAROON, Thunjira PAIBOONRATTANAKORN, Teppakorn SITTIWANCHAI</i>	1191
 E-Business and E-Commerce	
e-Commerce Logistics – Contemporary Literature <i>Hamid JAFARI</i>	1196
An ERP-based Solution for the Supply Chain Planning of Medium-sized Global Manufacturing Company <i>Jun-Der LEU, Andre KRISCHKE, Yi-Ping LEE, Larry Jung-Hsing LEE, Yi-Wei HUANG</i>	1201
Integration of Small and Medium Enterprises for Industry 4.0 in the South African Water Services Sector: A Case Study for Johannesburg Water <i>Pholo NTHUTANG, Arnesh TELUKDARIE</i>	1206
Observational Learning in the Product Configuration Process: An Empirical Study <i>Yue WANG</i>	1211
Drone-delivery Using Autonomous Mobility: An Innovative Approach to Future Last-mile Delivery Problems <i>HoJoon David YOO, Stanislav CHANKOV</i>	1216
Robust Password-keeping System Using Block-chain Technology <i>Daniel TSE, Kaicheng LIANG, Bin CAI, Kecong HUANG</i>	1221
 Operations Research 4	
Lease Contract with Availability Target and Price Discount <i>Hennie HUSNIAH, Rachmawati WANGSAPUTRA, Bermawi P. ISKANDAR</i>	1226
Profit Maximization in Inventory Routing Problems <i>Anna ZAITSEVA, Lars Magnus HVATTUM, Sebastián URRUTIA</i>	1230
Using Iterated Greedy with a New Population Approach for the Flexible Job-shop Scheduling Problem <i>Ghiath AL AQEL, Xinyu LI, Liang GAO, Wenyin GONG, Rui WANG, Teng REN, Guohua WU</i>	1235

Research on Overall Improvement of Production Efficiency: A Case Study Based on Value Stream Mapping Analysis in Automobile Decoration Products Manufacturing Industry 1240
Huang LI, Chunming YE, Zhenbin ZHOU, Xinyu ZHOU, Xiaoxue FU, Lingling PENG

Challenges of Digital Transformation: The Case of the Non-profit Sector 1245
Saeedeh SHAFIEE NAHRKHALAJI, Sara SHAFIEE, Mitra SHAFIEE NAHRKHALAJI, Lars HVAM

Technology and Knowledge Management 2

Developing the Strategies for AI Products based on the Technology Decomposition Framework 1250
Song-Kyoo KIM

Brain Utilization of MNCs in Japan Compared with that of Japanese Companies Overseas 1255
Masayuki KONDO

Integration of Scenarios in Product-service System Development - Combining Scenarios, Use Cases and Requirements Traceability 1259
Dominik WEIDMANN, Felix SEIBEL, Lucia BECERRIL, Niklas KATTNER, Jona LEHR, Markus MOERTL, Udo LINDEMANN

Integration of Scenario-based Requirements Forecast into Model-based Product-service System Planning 1264
Dominik WEIDMANN, Stefan WINKLER, Markus MOERTL

Methodology for Digitalization – A Conceptual Model 1269
Huey Yuen NG, Puay Siew TAN, Y. G. LIM

Value Chain from Good to Great: Multiple-case Study of Estonian Companies 1274
Kadri MÄNNASOO, Mait RUNGI, Heili HEIN, Helery TASANE

How to Use Configuration Software in “Less Routine Design” Situations? Some Modelling Propositions 1279
Abdourahim SYLLA, Delphine GUILLON, Luis GARCES MONGE, Elise VAREILLES, Michel ALDANONDO, Thierry COUDERT, Laurent GENESTE

Technology and Knowledge Management 3

Network Structure and Positional Relationship of the External and Internal Technology Acquisition based on the Firm Self-citation Patent Network 1284
Chao-Chih HSUEH

Appropriate Technology and Management for Sustainability 1289
Jayshree PATNAIK, Bhaskar BHOWMICK

Social Network Analysis in Lean Thinking: A Method for Improving Information Flow in Technical Integrity Management System Development 1293
Andika RACHMAN, R.M. Chandima RATNAYAKE

Engineering Management Qualification: A Comparative Study for South African Universities 1299
Samuel MLANGENI, Arnesh TELUKDARIE

Measuring Product Success: A Literature Study 1304
Trifandi LASALEWO, Subagyo SUBAGYO, Hari Agung YUNIARTO, Budi HARTONO

Determinant of Startups’ Fund-raising Value: Entrepreneur and Firm Characteristic 1309
Pimolrat SATHAWORAWONG, Natcha THAWESAENGSKULTHAI, Kanis SAENGCHOTE

Configuration Lifecycle Management – Future of Product Configurators 1315
Anna MYRODIA, Thomas RANDRUP, Lars HVAM

Technology and Knowledge Management 4

Multiple Helix Approach in Advancing Sustainable Urban Energy Ecosystems <i>Nina TURA, Ville OJANEN, Tuomas PALOVIITA, Sini PIIPARINEN</i>	1320
Time Estimation for Product Configuration Systems Projects <i>Katrin KRISTJANSDOTTIR, Amartya GHOSH, Loris BATTISTELLO, Lars HVAM</i>	1327
Changes of Technological Knowledge Diversification within a Group of Inventors and Patent Value Corresponding to Technology Lifecycle <i>Ryo TAKEMURA, Noritomo OUCHI</i>	1332
Improving Modularization in Industry by Introducing a New Model for Module Classification <i>Dag RAUDBERGET, Fredrik ELGH</i>	1337
Two-dimensional Technology Profiling of Patent Portfolio <i>Chung-Huei KUAN, Wei-Ming TU, Dar-Zen CHEN</i>	1342
Industry 4.0 Implementation Barriers in Small and Medium Sized Enterprises: A Focus Group Study <i>Guido ORZES, Erwin RAUCH, Slavomir BEDNAR, Robert POKLEMBKA</i>	1348
Channel-based Phase and Power Controllable Intelligent Wireless Power Transfer Architecture Using 4 by 4 Planar Array Antennas <i>Kwonhong LEE, Jinhyoung KIM, Jinwook SEO, Hyunyoung YU, Cheolung CHA</i>	1353

Technology and Knowledge Management 5

Content Analysis Approach: A Review on the Extent of Science and Engineering Curriculum Meet Competency Requirements for Testing, Inspection and Certification Industry <i>Fanny TANG</i>	1356
A Conceptual Interaction Cycle Between Individual and Group Absorptive Capacity with Social Integration Mechanism and Cohesive Learning Group as Moderating Variables <i>Andy Susilo LUKITO-BUDI, Nurul INDARTI</i>	1361
The Complexity of Megaprojects in Developing Countries: A Literature Review <i>Retno Wulan DAMAYANTI, Budi HARTONO, Andi Rahadiyan WIJAYA</i>	1366
A Novel Concept for Solid Debris Extraction Technique from Used Lubricants for Predictive Maintenance <i>Sontinan INTASONTI, Tadpon KULLAWONG, Surapol RAADNUI</i>	1371

Systems Modeling and Simulation 2

Simulation-based Multiple Automated Guided Vehicles Considering Charging and Collision-free Requirements in Automatic Warehouse <i>C.K.M. LEE, K.L. KEUNG, K.K.H. NG, Daniel C.P. LAI</i>	1376
Simulation and Optimization of Production Line in Em-plant based Assembly Workshop <i>Hongying SHAN, Lina LI, Yu YUAN, C. WANG</i>	1381
Lean, Simulation and Optimization: The Case of Steering Knuckle Arm Production Line <i>Hongying SHAN, Yu YUAN, Yanxiang ZHANG, Lina LI, Chuang WANG</i>	1386
Efficient Modular Product Platform Design of Mechatronic Systems <i>Günther SCHUH, Christian DÖLLE, Sebastian BARG, Maximilian KUHN, Stefan BREUNIG</i>	1391

Informational Approach to Global Optimization with Input Uncertainty for Homoscedastic Stochastic Simulation 1396
Haowei WANG, Jun YUAN, Szu Hui NG

Energy Efficient Motion Planning of Dual-Armed Robots with Pickup Point Determination for Transportation Tasks 1401
Tatsushi NISHI, Yuki MORI

System Dynamics Approach for the Assessment of Leanness of Organizations 1406
Abhijeet K. DIGALWAR, Akshay BEDEKAR, Mohit AGRAWAL

Operations Research 3

Protecting a Sensitive Queue from Arrival Variability 1411
Mathieu VANDENBERGHE, Stijn DE VUYST, El-Houssaine AGHEZZAF, Herwig BRUNEEL

Multi-criteria Mathematical Model for Partial Double Track Railway Scheduling in Urban Rail Network 1416
Erlangga BAYU SETYAWAN, Dida Diah DAMAYANTI, Anton Abdulbasah KAMIL

Vehicle Routing: Application of Travelling Salesman Problem in a Dairy Distributor 1421
Rafael PALHARES, Maria Creuza BORGES DE ARAUJO

A Matheuristic for a Real-world Variant of the Multiple Traveling Salesman Problem 1426
Philipp BAUMANN

Robust Periodic Vehicle Routing Problem with Service Time Uncertainty 1431
Mingyao QI, Wangqi XIONG, Qingte ZHOU, Shijia HUA

Picking Station Location in Traditional and Flying-V Aisle Warehouses for Robotic Mobile Fulfillment System 1436
Lijuan FENG, Xinglu LIU, Mingyao QI, Shijia HUA, Qingte ZHOU

Decision Analysis and Methods 3

Novel SKU Classification Approach for Autonomous Inventory Planning 1441
Fengyu WANG, Huey Yuen NG, Thai Ee NG

Fundamental Design Types of Modular Product Platforms 1446
Sebastian BARG, Günther SCHUH, Christian DÖLLE

Optimal Overbooking Decision for Perishable Resources with Jointly Stochastic Booking and Show-up Requests 1451
Suppasit JONGCHEVEEVAT, Naragain PHUMCHUSRI, Amonsiri VILASDAECHANONT

Multicriteria Inventory Classification of Diabetes Drugs Using a Comparison of AHP and Fuzzy AHP Models 1456
Kaushik NAG, Magdy HELAL

Data-Based Identification Method for Jobshop Scheduling Problems Using Timed Petri Nets 1461
Tatsushi NISHI, Naoki SHIMAMURA

Development of a Methodology to Design Product Portfolios in Accordance to Corporate Goals Using an Evolutionary Algorithm 1466
Michael RIESENER, Christian DÖLLE, Lukas SCHMITT, Merle-Hendrikje JANK

Public Perception of the Nuclear Research Reactor in Thailand 1471
Sarasinee TANTITAECHOCHART, Naraphorn PAOPRASERT, Kampanart SILVA

Manufacturing Systems 3

- A Modified MOEA/D for Energy-efficient Flexible Job Shop Scheduling Problem 1476
Enda JIANG, Ling WANG
- Radical Product Innovation in the New Zealand Food and Beverage Industry: The Effect of Company Age, Size, and Foreign Ownership 1481
Julawit PITRCHART, Nihal JAYAMAHA, Allan ANDERSON
- Integrated Simulation Optimization for Layout Problems 1486
Henri PIERREVAL
- Implementing FPGA based PID-controller for Extrusion to Reduce Raw Material Wastage 1491
Samreen HUSSAIN, Muhammad ISMAEEL, Adnan WAQAR, Muhammad Ali AMJAD, Muhammad Mubeen IQBAL, Muhammad SHAUR, Rimsha ARSHAD
- Rapid Thermal Simulation of Powder Bed Additive Manufacturing 1498
Frédéric VIGNAT, Nicolas BERAUD, Francois VILLENEUVE
- Energy Consumption Control of One Machine Manufacturing System with Stochastic Arrivals Based on Fuzzy Logic 1503
Eliana TORRES DUQUE, Zicheng FEI, Junfeng WANG, Shiqi LI, Yuanfang LI
- Analysis of Product Designs for Product Recovery Using Linear Physical Programming 1508
Aditi D. JOSHI, Surendra M. GUPTA

Big Data and Analytics 2

- Evidences of Technological Advantage Gains: The Case of Mergers and Acquisitions in the Agrichemical Industry 1513
Chun-Chieh WANG, Mu-Hsuan HUANG, Yu-Wei CHANG
- Do Long-term Patents Have a Higher Citation Impact? 1518
Huei-Ru DONG, Dar-Zen CHEN, Mu-Hsuan HUANG
- Categorization of Mergers and Acquisitions in Japan Using Corporate Databases: A Fundamental Research for Prediction 1523
Bohua SHAO, Kimitaka ASATANI, Ichiro SAKATA
- Distributed-based Hierarchical Clustering System for Large-scale Semiconductor Wafers 1528
Seungchul LEE, Daeyoung KIM
- A Learning Analytics Tool for Predictive Modeling of Dropout and Certificate Acquisition on MOOCs for Professional Learning 1533
Ruth COBOS, Lara OLMOS
- Study on Unbalanced Binary Classification with Unknown Misclassification Costs 1538
Jun GAO, Lin GONG, JinYi WANG, ZhenChong MO
- Data Analytics Framework for State Owned Enterprise of Bhutan 1543
Yadap SUBERI, Devi Bhakta SUBERI

Service Innovation and Management 3

- Multinational Enterprises R&D in China, Government Subsidy Effect: An Empirical Research Based on Simultaneous Equations 1548
Jian WANG, Peng GUO, Qilei LIU

Sustainability-oriented Innovation (SOI) in Emerging Economies: A Preliminary Investigation from Indonesia <i>Budi HARSANTO, Roula MICHAELIDES, Helga DRUMMOND</i>	1553
Business Logistics Optimization using Industry 4.0: Current Status and Opportunities <i>Bag SURAJIT, Arnesh TELUKDARIE</i>	1558
Testing and Extending P-Transqual Public Transport Service Quality Model: A Causal Approach <i>I. Gede Mahatma Yuda BAKTI, Tri RAKHMAWATI, Sih DAMAYANTI, Sik SUMAEDI, Medi YARMEN</i>	1563
How Kano's Performance Mediates Perceived SERVQUAL Impact on Kansei <i>Markus HARTONO</i>	1568
A Study Regarding the Gap Between the Industry and Academia Expectations for College Student's Employability <i>Feng-Ming SUI, Jen-Chia CHANG, Hsi-Chi HSIAO, Su-Chang CHEN, Dyi-Cheng CHEN</i>	1573
Visualize Organizational Perception of Core Value in the Company: An Experiment Employing Multi-dimensional Scaling and the Competing Value Framework <i>Sanetake NAGAYOSHI, Jun NAKAMURA</i>	1578
Posters	
Managing Outsourced Logistics Service Projects as Complex Networked Resources <i>Fahad AWALEH, Per ENGELSETH</i>	1583
Location Analysis of Regional Disaster Relief Material Reserve Center: A Case Study in Sichuan Province, China <i>Xuedong LIANG, Ruyun ZHANG, Canmian LIU</i>	1588
Hospital Capacity Planning for Special Economic Zone in Thailand: A Case Study in Kanchanaburi Province <i>Sao Theary AN, D. KRITCHANCHAI</i>	1593
Optimizing (r, Q) Decisions Considering Misplaced Items: Lost-sales and Backorder Cases <i>Linda L. ZHANG, G. Yazgi TUTUNCU, Ceki FRANKO</i>	1598
Analysis of Stackelberg Leadership Model Output Behavior under the Mechanism of Expanding Market Price <i>Tyrone T. LIN, Shu Yen HSU, Chiao Chen CHANG</i>	1603
A Project Management with Allocating Advertising Budgets' Decision Analysis in Aesthetic Medicine Industry <i>Hui-Tzu YEN, Tyrone T. LIN</i>	1608
Research on Service Industry Network Structure based on Social Network Analysis <i>Xuedong LIANG, Yangjingjing ZHANG, Yue LU, Canmian LIU</i>	1613
Inequality Structure of Global Investment: Analysis and Simulation of an M&A Network <i>Kimitaka ASATANI, Hiroko YAMANO, Masanao OCHI, Ichiro SAKATA</i>	1618
Using Time-dependent Attractiveness to Evaluate Dynamic Place-based Accessibility <i>William H. K. LAM, Bi Yu CHEN, Agachai SUMALEE</i>	1623
On Setting Business Goal in Corporations <i>Shin-Guang CHEN</i>	1628
Hotel Cancellation Strategies Under Online Advanced Booking <i>Yifan HE, Pingping WEN, Yongquan LAN, Zhaowei MIAO</i>	1632

Optimal Cleaning Schedule of Photovoltaic Module <i>Zhonghao WANG, ZhengGuo XU</i>	1637
Systems Analysis and Design of a Smart Traffic Service System for Predictive and Smarter Mobility and Safety in Roadway Work Zones <i>Roger J. JIAO, James Y. TSUI</i>	1642
Operating Data-driven Predictive Analytics for Tele-diagnosis of Refrigeration Systems: A Case Study <i>Tianyi LU, Jun DU, Roger J. JIAO</i>	1647
Text Mining-based Approach for Forecasting Spare Parts Demand of K-X Tanks <i>Jaedong KIM</i>	1652
Minimization of Critical Infrastructure Accident Losses of Chemical Releases Impacted by Climate-Weather Change <i>Magda BOGALECKA, Krzysztof KOŁOWROCKI</i>	1657
A Novel Two-stage Method of Selection of Sample Points for Surface Quality Estimation of Multi-hole Workpiece <i>Delin HUANG, Shichang DU, Guilong LI, Tangbin XIA</i>	1662
One-Sided Synthetic Control Charts for Monitoring the Coefficient of Variation with Measurement Errors <i>Kim Phuc TRAN, Huu Du NGUYEN, Quoc Thong NGUYEN, Wichai CHATTINAWAT</i>	1667
Quality Evaluation of Diesel Marine Engine Based on Fuzzy Analytic Hierarchy Process and Improved Close Value Method <i>Yuliang ZHOU, Shenghan ZHOU, YiYong XIAO, Wenbing CHANG</i>	1672
Research of Foreign Trade Equipment Preventive Maintenance Decision Scheme based on User Capability <i>Weikang XUE, Weiwei CUI, Xiao HU, Xiaodong MA, Yao WANG</i>	1677
Research on Fault Diagnosis of Rolling Bearing Based on Wavelet Packet Transform and IPSO-SVM <i>Yingxiang ZHONG, Fan HONG-LI, Jiping LU, Lu PANG, Yuanfang LI</i>	1682
Reliability and Efficiency Optimization Assisted by Genetic Algorithm to Design a Quadratic Boost DC/DC Converter <i>Giuseppe MARSALA, Antonella RAGUSA</i>	1687
Degradation Modeling and Performance Monitoring of Electro-optical Detection System via Dynamic Bayesian Network <i>Jinsong YU, Yiyu SHI, Diyin TANG, Hao LIU</i>	1693
Time-dependent Reliability Modelling Method Based on Load-strength Model in the Presence of Environmental Effects <i>Jian-Chun ZHANG, Yu ZHAO, Xiao-Bing MA</i>	1699
Maintenance Planning Key Process Area: Case Study at Oil & Gas Industry in Indonesia <i>Rahmat NURCAHYO, Dedy DARMAWAN, Yadrifil JANNIS, Ary KURNIATI, Muhammad HABIBURRAHMAN</i>	1704
A Multi-objective Framework for Designing Accelerated Degradation Tests Under Wiener Process Model <i>Han WANG, Yu ZHAO, Xiao-Bing MA</i>	1709
Cold-standby Redundancy Optimization for Multi-type Production Systems Using NSGA-II <i>Wei WANG, Yaofeng XU, Jiqing WEI, Wei QU</i>	1714
Multi-scale Configuration Design Method of Reconfigurable Manufacturing System Based on Living System Theory <i>Sihan HUANG, Guoxin WANG, Siming WANG, Cong ZENG, Hongwei WANG, Yan YAN</i>	1719

Selective Maintenance Decision for Multistate Manufacturing System Based on Extended State Task Network	1725
<i>Zhaoxiang CHEN, Yihai HE, Yixiao ZHAO, Xiao HAN, Zheng HE</i>	
Introducing a Holistic Profitability Model for Additive Manufacturing: An Analysis of Laser-powder Bed Fusion	1730
<i>Frank Thomas PILLER, Reinhart POPRAWA, Johannes Henrich SCHLEIFENBAUM, Günther SCHUH, Sebastian BARG, Christian DÖLLE, Christian HINKE, Merle-Hendrikje JANK, Ruth JIANG, Wilhelm MEINERS, Michael RIESENER, Johannes SCHRAGE, Stephan ZIEGLER</i>	
The Layout Optimization Problem of Automobile Engine Production Line	1736
<i>Hang LI, Ran LIU, Lun SHI</i>	
Applying the Axiomatic Design with Design Constraint to Redesign of Automatic Work-piece Changer	1741
<i>Tossaporn ASSAWARUNGSRI, Nattawut JANThONG</i>	
An Example of Machine Learning Applied in Additive Manufacturing	1746
<i>Amelina DOUARD, Christelle GRANDVALLET, Franck POURROY, Frédéric VIGNAT</i>	
Critical Assessment on Dangerous Goods Storage Container Yard of Port: Case Study of LPG Tank Container	1751
<i>Guanquan CHU, Guangyu LYU</i>	
Risk Identification Practice in Patient Safety Context	1756
<i>Mecit Can Emre SIMSEKLER, Raja JAYARAMAN</i>	
Critical Infrastructure Safety Indicators	1761
<i>Krzysztof KOLOWROCKI, Joanna SOSZYNSKA-BUDNY</i>	
Critical Infrastructure Impacted by Operation Safety and Resilience Indicators	1765
<i>Joanna SOSZYNSKA-BUDNY, Krzysztof KOLOWROCKI</i>	
Detecting Technological Recombination for Potential R&D Exploration	1770
<i>Xiao ZHOU, Lu HUANG</i>	
Strategy Transformation Through Cultural Tradition Innovation – A Case Study of Fenjiu Group of China Time-honored Brand	1775
<i>Haibing LIU, Qingrui XU, Lihua WANG, Wenjing FENG, Li LIU</i>	
Study on Incentive Mechanism of Knowledge Sharing in Supply Chain Based on Evolutionary Game Theory	1780
<i>Qiankun WANG, Shi QIAO</i>	
A Serious Game for Competence Development in Internet of Things and Knowledge Sharing	1786
<i>Ugyen NIMA, Jannicke Baalsrud HAUGE, Rinzin WANGDI</i>	
A Chatbot-supported Smart Wireless Interactive Healthcare System for Weight Control and Health Promotion	1791
<i>Chin-Yuan HUANG, Ming-Chin YANG, Chin-Yu HUANG, Yu-Jui CHEN, Meng-Lin WU, Kai-Wen CHEN</i>	
Product Platform Planning through Sensitivity Analysis and Improved QFD Approach	1796
<i>Lei ZHANG, Hansi CHEN, Zhenlong YUAN, Xuening CHU</i>	
Performance Assessment of Product Modules Based on Usage Data Collected Through Embedded Sensors	1801
<i>Hansi CHEN, Lei ZHANG, Xuening CHU</i>	
An Approach to Multidimensional Medical Data Analysis Based on the Skyline Operator	1806
<i>Min CHE, Liya WANG, Zhibin JIANG</i>	

Asynchronous Multi-sensor Data Fusion with Decentralized IMM-PDAF <i>Woo Jung PARK, Chang Ho KANG, Sun Young KIM, Chan Gook PARK</i>	1811
Support Reuse and Maintenance of Design Information in a Development Process of Custom Engineered Product <i>Morteza POORKIANY, Joel JOHANSSON, Fredrik ELGH</i>	1816
Comparison of Clustering Methods for Obesity Classification <i>Sung Hee AHN, Cai WANG, Gee Won SHIN, Donggun PARK, Yohan KANG, Jaramier JOIBI, Myung Hwan YUN</i>	1821
Building Material Price Forecasting Based on Multi-method in China <i>Qiankun WANG, Tingting MEI, Zeng GUO, Lingwei KONG</i>	1826
Scoping a PIM System: A Supporting Framework <i>Loris BATTISTELLO, Katrin KRISTJANSDOTTIR, Lars HVAM</i>	1831
Reengineering of Factory Planning Processes for the Realization of Digital Factory 4.0 <i>Uwe DOMBROWSKI, Alexander KARL, Alexander REISWICH</i>	1836
Emerging Simulation and VR for Green Innovations: A Case Study on Promoting a Zero-carbon Emission Platform in Hong Kong <i>Cheuk Hang AU, Wai Ki YIU, Walter S. L. FUNG</i>	1841
Simulation Analysis on Energy Consumption of Multi-shuttle Automated Storage and Retrieval Systems <i>Peng YANG, Wenjun XU, Shilu WANG</i>	1846
A Study on Designing Off-grid System Using HOMER Pro - A Case Study <i>Sungjun JIN, Hyoungtae KIM, Tae Hyun KIM, Hansol SHIN, Kyuhyeong KWAG, Wook KIM</i>	1851
Integrating Hierarchical Task Analysis into Model-Based System Design using Airbus XHTA and IBM Rational Rhapsody <i>Jakob ROTT, Julian WEIXLER, Alexander RABL, Peter SANDL, Mario WEIß, Birgit VOGEL-HEUSER</i>	1856
Integrated Cyber Physical Simulation Modelling Environment for Manufacturing 4.0 <i>Weidong LIN, Y.H. LOW, Y.T. CHONG, C.L. TEO</i>	1861
Multi-objective Design Space Exploration for the Integration of Advanced Analytics in Cyber-physical Production Systems <i>Romuald Jupiter BAKAKEU NGASSAM, Jonathan FUCHS, Tallal JAVIED, Matthias BROSSOG, Jorg FRANKE, Hans-Henning KLOS, Werner EBERLEIN, Schirin TOLKSDORF, Joern PESHKE, Lars JAHN</i>	1866
Building Energy Conservation Strategies Evaluation and Simulation <i>B-I WANG, Chien Ming LO, Min-Der LIN</i>	1874
Analysis and Optimization of Bottlenecks via Simulation <i>Ji'ao YUAN, Runtong ZHANG</i>	1879
Community Detection and Growth Potential Prediction Using the Stochastic Block Model and the Long Short-term Memory from Patent Citation Networks <i>Kensei NAKAI, Hirofumi NONAKA, Asahi HENTONA, Yuki KANAI, Takeshi SAKUMOTO, Shotaro KATAOKA, Elisa Claire ALEMÁN CARREÓN, Toru HIRAOKA</i>	1884
An Integrated Scheduling Strategy in Dynamic Scheduling of Manufacturing Execution System <i>Hui DU, Dacheng LIU, Chuanshen WANG</i>	1889
Simple and Cost Effective System for Overall Equipment Efficiency Measurement <i>Timo RAUTIO, Kari KUTUNIVA, Jarmo MÄKIKANGAS, Kari MÄNTYJÄRVI</i>	1895

Solving Profit Maximization Problem in Case of the Cobb-Douglas Production Function via Weighted AG Inequality and Geometric Programming <i>Vedran KOJIĆ, Zrinka LUKAČ</i>	1900
Collaborative Innovation Using Bi-processes Cross-functional Team on New Product Development <i>Yueen LI, Jiacheng ZHANG, Haiyan ZHANG</i>	1904
Systematic Selection, Adaptation and Integration of Quality Management Methods Into Quality Management Reporting <i>Cosima Nadine FITZ, Guanwei HUANG</i>	1909
Optimizing Production and Inventory Decisions for Mixed Make-to-order/Make-to-stock Ready-made Garment Industry <i>Aya ELMEHANNY, Tamer ABDELMAGUID, Amr ELTAWIL</i>	1913
Author Index	1914

Multi-criteria Mathematical Model for Partial Double Track Railway Scheduling in Urban Rail Network

Erlangga Bayu Setyawan, Dida Diah Damayanti, Anton Abdulbasah Kamil
Department of Industrial Engineering, Telkom University, Bandung, Indonesia
erlangga.setyawan@gmail.com, didadiah@gmail.com, kamil.antonabdulbasah@gmail.com

Abstract - Train scheduling is one of the tactical planning of a railway service company. The challenge of railway scheduling is when the type of track that is passed is a partial track double track. If the scheduling is not optimal, will cause the idle time, where the train must wait for the intersection. This research purpose mathematical model for train scheduling problem in partial double track rail line to minimize idle time. We consider three criteria in developing this mathematical model: (1) Coupling / uncoupling wagon to minimize deadhead trip; (2) Fixed block signaling; (3) Rail and station capacity; (4) Meeting and passing in partial double track. To test our model, we used actual data in Indonesian Railway, especially in shout track railway, track from Bandung - Yogyakarta City. Using this mathematical model, our purposed model can minimize total idle time.

Keywords – Railway Optimization, Railway Scheduling, Operation Research.

I. INTRODUCTION

The high number of regular train departures required optimal rail scheduling to minimize travel time. Basically, the total travel time of rail i in segment j is the difference from leaving time of train i in segment j (e_{ij}) with leaving time of train i in segment j (s_{ij}). Total travel time consists of three components, i.e., the standard travel time, travel time tolerance and idle time. Standard travel time (t_{ij}^0) is the standard travel time required by train i to complete the journey on a segment j . The travel time of tolerance (T_{ij}) is the additional time or tolerance time of train in passing through a segment. The travel time of tolerance is required because the train runs on a segment at an unstable speed. If the travel time of rail i in segment j ($e_{ij} - s_{ij}$) $\geq t_{ij}^0 + T_{ij}$, the time difference between $e_{ij} - s_{ij}$ with $t_{ij}^0 + T_{ij}$ is idle time (ρ_{ij}). The idle time of the train is divided into two, that is, the idle time when the train is waiting at the intersection and idle time when the train will enter segment j .

Scheduling performance of regular train which has been owned by Indonesia Railway not yet optimal, especially on the south track. This is evidenced by the train schedule still has a high total idle time on each railway class. Based on the priority level, regular trains are divided into five classes that indicate the priority of trains, i.e., first class, second class, third class, fourth and fifth class. The smaller the class, the higher the priority of the train. From the results of the problem studies,

schedule performance and idle time data on the south track for each priority class is shown in Figure I. 1.

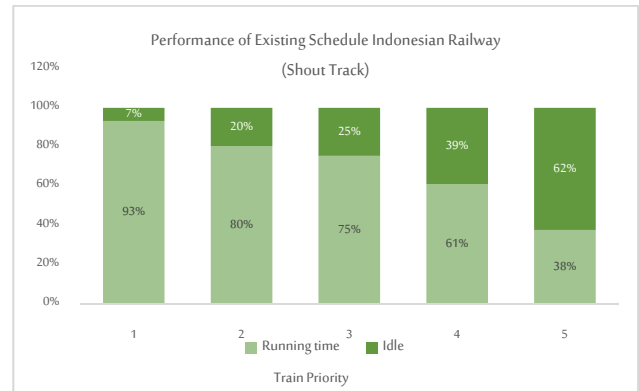


Fig. 1. Existing Schedule Indonesian Railway

To solve the high idle time on the Bandung - Yogyakarta railway track evaluated in Figure I. 1, the authors propose a model of rail scheduling by adopting multi-item multi-item scheduling on a partial dual track. In this study the authors will develop scheduling for railway cases in Indonesia, especially for the Bandung - Yogyakarta route to reduce the delay of train scheduling. The Bandung - Yogyakarta route was chosen to be the case study in this study because there are still 42% of single tracks and when viewed from topographical point of view, it is the track that has the most differences in the speed of the train in each segment. This stage will result in a more optimal new train schedule by minimizing total idle time. The scheduling model to be developed by the researcher is multi-item scheduling on multi-criteria capacitated no-wait parallel machine job shop scheduling by adding a drum buffer rope border function. This limiting function is the development of the theory of constrain used to optimize the balance in production machinery [1].

II. RELATED WORKS

The development of the proposed railway scheduling model in this study, refers to case studies on actual train scheduling of Indonesian Railway Company. Some of the basic models used as a reference for model development in this study are the train scheduling model developed by [2] and [3]. Previous study [2] developed a railway scheduling model on a partial dual track that aims to minimize rail travel time. The research is more focused on the mathematical model to regulate the movement of

trains from double tracks to single tracks in multi-direction. With the scheduling model, the train will be spared from collisions when the displacement process is on a partial double track.

The scheduling model developed by [3] is a scheduling model on a partial dual track with regard to penalties when a train is scheduled to arrive at a station beyond the expectation of a consumer. With the model, the train will be scheduled in accordance with the travel time desired by consumers, where the shorter the time of the railway, the higher the value of customer satisfaction. This type of partial double track becomes the limiting on this model because the train will require a longer travel time when it passes a single track.

The railway scheduling model [4] was adopted to apply the process when the train made a change in the number of railway compositions. While the scheduling model [5] is used to arrange rail scheduling with respect to the ratio of the number of single tracks and the number of double tracks. This scheduling model will be refined in this thesis research by adding a new limiting variable, that is, the drum buffer rope used to reduce the density when the train passes a single track from a dual track. The scheduling model with the buffer rope drum barrier will be adopted from the model developed by [1]. Drum buffer rope is one of the theory of constraints that serves to prevent bottle neck from occurring in a process that has a lower capacity than other processes.

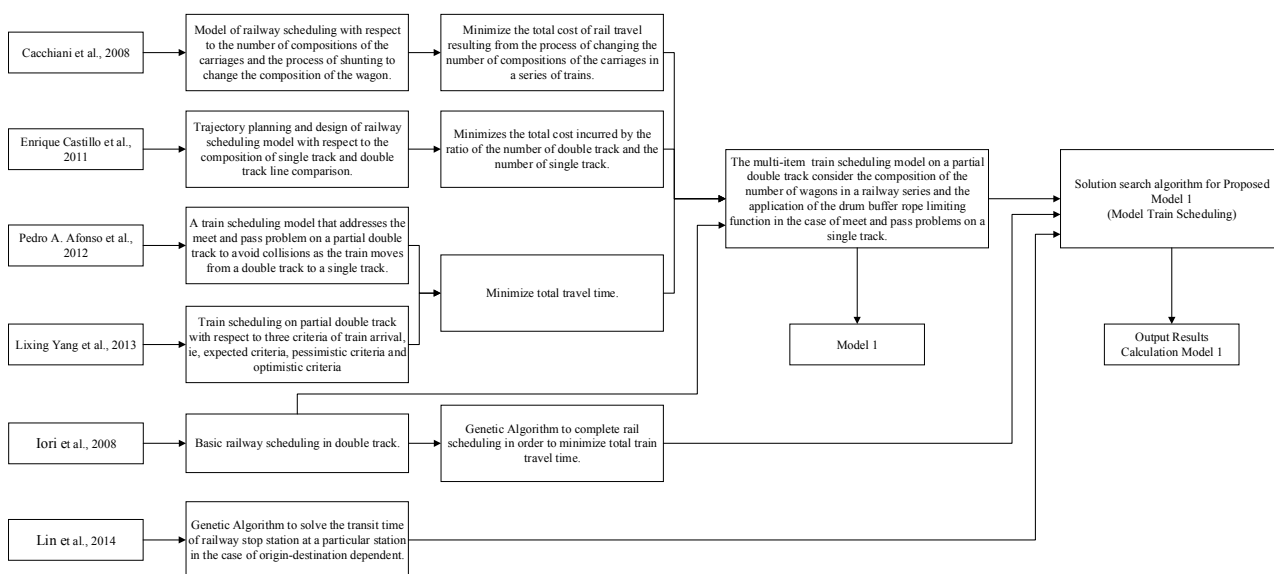


Fig. 2. Model Development of Railway Scheduling

Drum buffer rope will identify the number of reserve entities (trains) that are ready to be scheduled in a segment that has a low capacity. If the number of reserve trains has been reduced from the specified limit, the drum buffer rope will instruct the next train to depart from the initial station. This will avoid the buildup of segments with low capacity.

This study refers to several models of scheduling:

1. Research [6] uses the basic scheduling job shop scheduling to determine the optimal rail sequence in rail scheduling. The research was then developed by adopting a no-wait job shop scheduling algorithm where the algorithm is very focused on minimizing the delay in a production schedule.
2. The research was then developed by adopting a no-wait job shop scheduling algorithm where the algorithm is very focused on minimizing the delay in a production schedule [7] and [8].
3. Research [4] uses a parallel machine job shop scheduling approach with respect to variable amount of composition of passenger trains. The purpose of the

research is to minimize the number of passenger train cars by adding and subtracting train cars according to the number of passengers at a certain stage.

Description of the development of the model to be used is as follows:

1. Multi-item job shop: used to optimize jobs simultaneously. Job is implied as a train that is dispatched to be processed on a machine (rail).
2. No-wait job shop: used to prioritize first class trains because they should not be interfered with the delays caused by trains other than the first class. In the event of a delay, then the train other than the first class is only allowed to be late because the first-class train has the highest priority.
3. Dynamic capacitated job shop scheduling: the number of passenger train cars may vary when train is traveling. This leads to differences in rail travel time in passing through a segment block.
4. Blocking job shop scheduling: used to optimize if one of the rails is impassable due to

interference. Trains will be diverted to other available rails. This condition is called the rescheduling backup track [9].

III. METHODOLOGY

To develop mathematical model, we used some limitations and assumptions, i.e.:

1. Do not consider the rescheduling of the railway due to the occurrence of large disturbances and requires a long recovery time.
2. This study only uses historical data, not using actual data from ATP (automatic train protection) or ATC (automatic train control).
3. Not considering the use of locomotive types.
4. Do not consider the carriage of goods on a series of trains.

The objective function of regular rail scheduling is to minimize the total idle time of trains through Bandung - Yogyakarta. The idle time minimization evaluation process will be performed on each segment j , starting from the first segment $j=1$, where the train is dispatched from the starting station, until the train arrives at the end station m .

$$\text{Minimize } Z = \sum_{i=1}^n \sum_{j=1}^m \rho_{ij} \quad (1)$$

Constrains:

1. Leaving time train i in segment j

$$e_{(i,j)} \geq s_{(i,j)} + t_{ij}^0 + \delta_{(i,j)} + 0,4 \left(Wn_{ij} \frac{sd_{ij}}{1000} \right) + c_{(i,j)} \max(0, C_{(i,j)}) \quad (2)$$

The train i will leave the segment j after the train i arrives in segment j (s_{ij}), plus the actual travel time (t_{ij}^0), the loading and or unloading time of the passenger, the time of the change of the composition of the railway wagon ($c_{i_{a_{ik}}}$). While C_{ij} is the decision variable of a train to change the composition of the number of carriages (shunting process), C_{ij} worth 0 if the replacement process of the composition of the carriage, C_{ij} worth 1 if no replacement process of the composition of the carriage.

$$\delta_{i_{a_{ik}}} = \begin{cases} \delta_{ij}^{\min}, & \text{if there is passenger's loading/unloading} \\ \delta_{ij}^{\max}, & \text{otherwise} \end{cases}$$

$$C_{ij} = \begin{cases} 1, & \text{if } Q_{kij} + \sum_{ijk} Q_{kij-1} > P_{kij} \text{ and } w_{kij} < w_{ki}^{\max} \\ 0, & \text{otherwise} \end{cases}$$

2. Station Capacity

$$\sum_{ijt} \gamma_{ijt} \leq b_j^{\max} \quad (3)$$

Variable b_j^{\max} is used to define the maximum capacity of a station j . The decision variable γ_{ijt} serves to indicate whether train i stops at station j at time t and is a binary variable. The variable γ_{ijt} is 1 if the train i stops at station j at time t and 0 otherwise. The total number of trains i

that stops at station j in time t $\sum_{ijt} \gamma_{ijt}$ must be less than or equal to the total capacity of a station.

3. Train Dwell Time While Entering Station (next segment)

$$s_{i_{a_{ik}}} \geq e_{i_{a_{ik-1}}} + d_{ij}^{\min}(\alpha_{ijt}) \quad (4)$$

The arrival time of rail i in segment j is allowed to be greater than or equal to the time of departure of train i in $j-1$ segment plus minimum dwell time tolerance d_{ij}^{\min} , while α_{ijt} is binary variable if there is dwelling time when entering the station.

$$\alpha_{ijt} = \begin{cases} 1, & \text{if } \sum_{ijt} \gamma_{ijt} \geq b_j^{\max} \\ 0, & \text{otherwise} \end{cases}$$

4. Minimum Headway (Opposite Direction)

$$s_{i_2j} \geq e_{i_1j} + h_j^0 x_{i_1,i_2,j} - M(1 - x_{i_1,i_2,j}) \quad (5)$$

$$s_{i_1j} \geq e_{i_2j} + h_j^0 y_{i_1,i_2,j} - M(1 - y_{i_1,i_2,j})$$

$$x_{i_1,i_2,j} = \begin{cases} 1, & \text{if } (PT_{i_1} < PT_{i_2}) \\ 0, & \text{Otherwise} \end{cases}$$

$$y_{i_1,i_2,j} = \begin{cases} 1, & \text{if } (PT_{i_1} > PT_{i_2}) \\ 0, & \text{Otherwise} \end{cases}$$

Since the railway station may be used in multi-direction, it will be the railroad scenario in the opposite direction, i.e., between the train going into the station downstream and the train going out to the downstream station.

5. Minimum Headway (Opposite Direction)

$$s_{i_2j} \geq s_{i_1j} + h_{i_1,i_2} x_{i_1,i_2,j} - M(1 - x_{i_1,i_2,j})$$

$$s_{i_1j} \geq s_{i_2j} + h_{i_1,i_2} y_{i_1,i_2,j} - M(1 - y_{i_1,i_2,j}) \quad (6)$$

$$e_{i_2j} \geq e_{i_1j} + h_{i_1,i_2} x_{i_1,i_2,j} - M(1 - x_{i_1,i_2,j})$$

$$e_{i_1j} \geq e_{i_2j} + h_{i_1,i_2} y_{i_1,i_2,j} - M(1 - y_{i_1,i_2,j})$$

Constraint (6) is an integration limiting function that limits the train going in or out to or from segment j . This constrain used to restrict and regulate the train leaving or entering the station in the same direction (same direction). The train boundary function that goes unidirectionally is simpler than the opposite train.

6. Meeting and Passing (Train Crossing)

$$s_{i_2(j+1)} \geq e_{i_1(j+1)} + M(1 - CR_{i_1,i_2,j}) \quad (7)$$

$$s_{i_1j} \geq e_{i_2j} + M(1 - CR_{i_1,i_2,j})$$

$$CR_{i_1,i_2,j} = \begin{cases} 1, & \text{if } (PT_{i_1} < PT_{i_2}) \\ 0, & \text{Otherwise} \end{cases}$$

This limiting function serves to set the train at the junction between single track and double track. Single track tracks can be traversed by rail in two directions, i.e., downstream direction (direction to Yogyakarta Station) and upstream direction (direction to Bandung Station).

The model proposed to solve the problems studied in this thesis research is a Non-Polynomial (NP) Hard Problem. This is because the proposed model has a high level of complexity as evidenced by the number of variables considered. This condition results in finding a solution using the exact optimization method, that is, mixed integer non-linear programming, unable to solve this problem because the computational time of its completion cannot be limited by polynomial time. Solution search is done using a metaheuristic approach algorithm. The metaheuristic algorithm limits the optimization process with decision problems, such as, the maximum number of iterations. The weakness of the metaheuristic algorithm is that the optimal solution produced is not as good as the exact method, such as, mixed integer non-linear programming.

The metaheuristic algorithm chosen to solve this scheduling problem is the Genetic Algorithm. Genetic Algebra performs several evaluations in finding optimal solutions, namely, fitness evaluation of the initial population and genetic evaluation. Chromosomes that have good fitness value are crossed on genetic evaluation with other chromosomes that have a good fitness value, so as to produce superior children. The results of the crossing process are evaluated again. Child chromosomes that have poor fitness values are eliminated / mutated so that they are not mated with other chromosomes in the next iteration. Iterations stop after reaching the maximum number of generations (number of iterations) that have been defined. This condition causes the Genetic Algorithm to produce an optimal solution that is better when compared to other metaheuristic algorithms.

IV. RESULTS

A. Transit Time Analysis

Improvements to rail scheduling are done to minimize the idle time used by trains to cross and queue when trains will enter the station. The measurement of decreasing idle time is by comparing the average length of rail transit time at a station in each class between initial conditions and proposed conditions. Since it is a parameter, the passenger loading time between the initial conditions and the proposed conditions is a fixed value. The idle time is a variable whose value will change as it is affected by the scheduling improvements made. The smaller the idle time value generated, the better the scheduling performance has been proposed. Table 1 and table 2 shows the differences between existing and purposing average transit time.

TABLE 1. Existing Average Transit Time

Train Priority	Number of Train	Average Transit Time
1	6	4,166666667
2	13	5,793040293
3	20	6,212200855
4	65	7,542305942
5	48	7,986805556

TABLE 2. Purposing Average Transit Time

Train Priority	Number of Train	Average Transit Time
1	6	3,775
2	13	5,034798535
3	20	5,404337607
4	65	7,006472203
5	48	7,817361111

B. Idle Time Analysis

In accordance with the proposed rail scheduling model, to achieve the minimum idle value is by changing the decision variables in the form of departure and train arrival times in each segment. The correct combination of train scheduling sequences will minimize railway waiting time for crossing when moving from double track to single track and minimizing railway waiting time when it enters the station. To cross the rail, a train with a lower priority class, will wait for a higher priority rail to pass on a single track. Therefore, trains that have high priority, have an average value of idle time is smaller than the lower priority. Table 3 and Table 4 show the existing idle time values and the idle time purposing values of the optimized scheduling using the proposed model.

TABLE 3. Existing Idle Time

Train Priority	Idle Percentage	
	Idle Minimum	Idle Maximum
1	4%	9%
2	8%	27%
3	12%	41%
4	15%	72%
5	18%	72%

TABLE 4. Purposing Idle Time

Train Priority	Idle Percentage	
	Idle Minimum	Idle Maximum
1	1%	6%
2	1%	21%
3	4%	26%
4	3%	54%
5	17%	59%

C. Makespan Analysis

The calculation of the makespan for the proposed condition is equal to the calculation of the makespan value of the initial condition. Scheduled train departure schedules, ordered starting from the earliest to the very latest departure schedule. The next step is to calculate the makespan value on the proposal schedule.

The total makespan value on the scheduling of the proposed conditions is 27 hours 4 minutes. When compared with the initial scheduling pattern, there is a decrease in the makespan time by 13.94%.

V. CONCLUSION

The proposed model is a train scheduling model. The model can improve the initial scheduling performance of the Indonesian Railway Company. The improvement of the proposed scheduling model uses the no-wait method of job-shop scheduling on a parallel machine by adopting the theory of constrain in the form of a drum buffer rope. The results of the scheduling improvements that have been done can improve the initial scheduling of Indonesian Railway Company by 46.32%.

For further research, while developing rail scheduling, consider the following variables:

1. Highway density. The higher the rail utility used, the higher the congestion on the highway.
2. Taking into account the amount of rolling stock inventory, both locomotives and passenger cars.

REFERENCES

- [1] P. Georgiadis and A. Politou, "Dynamic Drum-Buffer-Rope approach for production planning and control in capacitated flow-shop manufacturing systems," *Comput. Ind. Eng.*, vol. 65, no. 4, pp. 689–703, 2013.
- [2] P. A. Afonso and C. F. Bispo, "Railway Traffic Management : Meet and Pass Problem," *J. Syst. Manag. Sci.*, vol. 1, no. 6, pp. 1–26, 2011.
- [3] L. Yang, Z. Gao, and K. Li, "Passenger train scheduling on a single-track or partially double-track railway with stochastic information," *Eng. Optim.*, vol. 42, no. 11, pp. 1003–1022, 2010.
- [4] V. Cacchiani, A. Caprara, and L. Galli, "Recoverable robustness for railway rolling stock planning," *ATMOS 2008, 8th Work. Algorithmic Approaches Transp. Model. Syst.*, pp. 1–13, 2008.
- [5] E. Castillo, I. Gallego, J. M. Ureña, and J. M. Coronado, "Timetabling optimization of a mixed double- and single-tracked railway network," *Appl. Math. Model.*, vol. 35, no. 2, pp. 859–878, 2011.
- [6] M. Carey and A. Kwieciński, "Stochastic approximation to the effects of headways on knock-on delays of trains," *Transp. Res. Part B*, vol. 28, no. 4, pp. 251–267, 1994.
- [7] T. Dollevoet, F. Corman, A. D'Ariano, and D. Huisman, "An iterative optimization framework for delay management and train scheduling," *Flex. Serv. Manuf. J.*, vol. 26, no. 4, pp. 490–515, 2014.
- [8] L. Kang, J. Wu, H. Sun, X. Zhu, and B. Wang, "A practical model for last train rescheduling with train delay in urban railway transit networks," *Omega (United Kingdom)*, vol. 50, pp. 29–42, 2015.
- [9] X. Li, B. Shou, and D. Ralescu, "Train rescheduling with stochastic recovery time: A new track-backup approach," *IEEE Trans. Syst. Man, Cybern. Syst.*, vol. 44, no. 9, pp. 1216–1233, 2014.